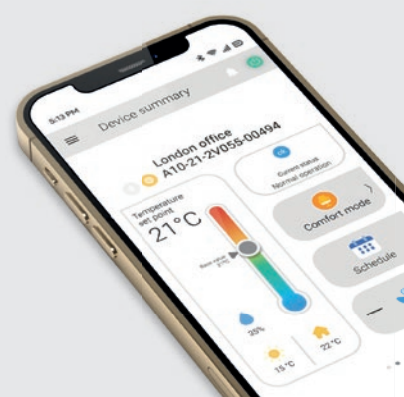




ventus

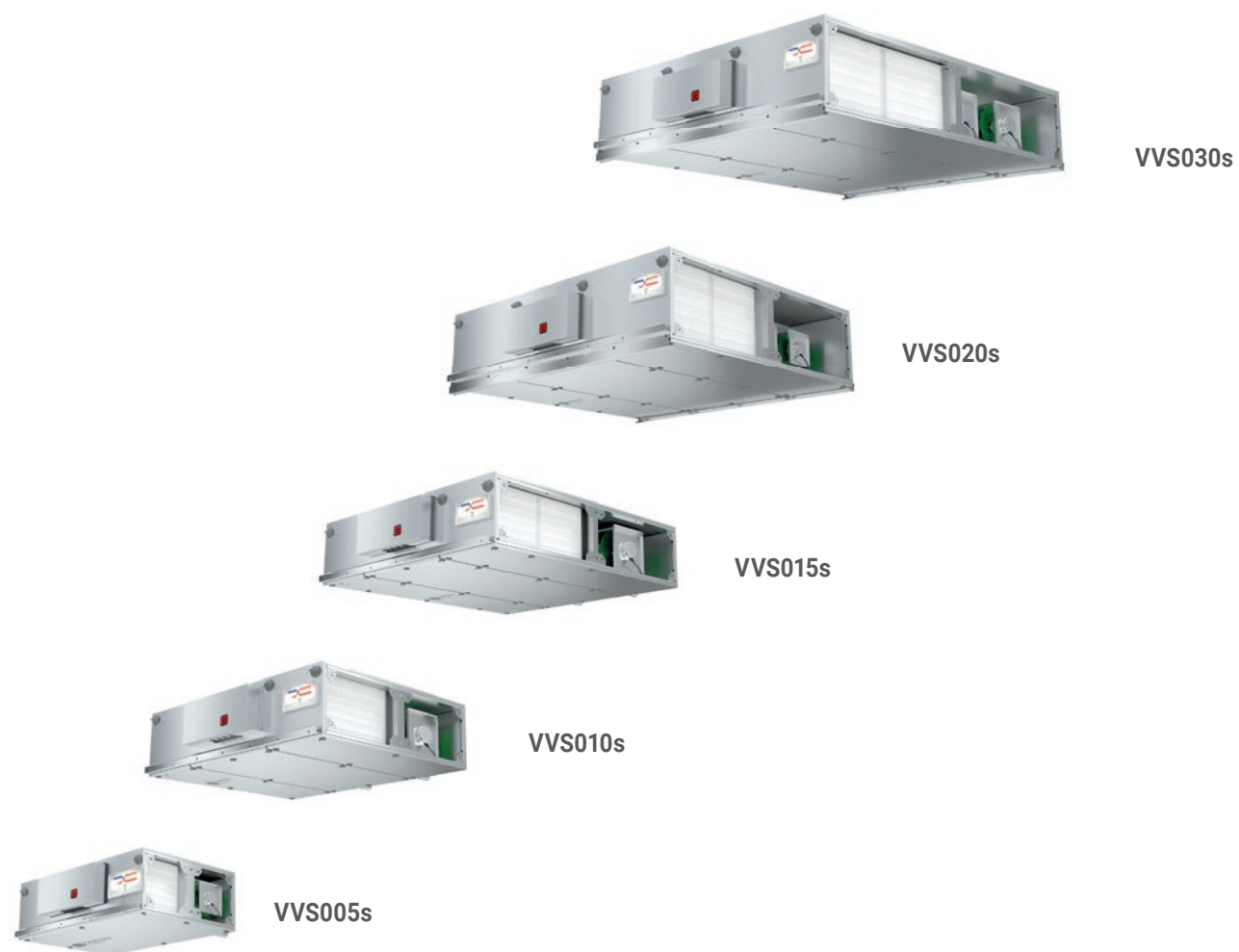
COMPACT
2025



www.vtsgroup.com

SUSPENDED AIR HANDLING UNITS

> with counter-flow heat exchanger (hex)



← 150 m³/h - airflow range - 3300 m³/h →

FLOOR MOUNTED AIR HANDLING UNITS

> with rotary heat exchanger
or hex counter-flow heat exchanger



← 840 m³/h - airflow range - 16 500 m³/h →

> with rotary heat exchanger
and heat pump



← 1 200 m³/h - airflow range - 7 500 m³/h →

> TOP with counter-flow
heat exchanger (hex)



← 1 250 m³/h - airflow range - 4 000 m³/h →

ADDITIONAL AIR TREATMENT FUNCTIONS



VENTUS COMPACT SUSPENDED AIR HANDLING UNITS

A

B

C

D

E

up to **90%**
recovery efficiency



MINERAL WOOL
INSULATION



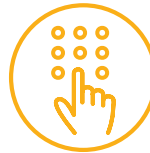
HIGHLY EFFICIENT
HEX COUNTER-FLOW
HEAT RECOVERY



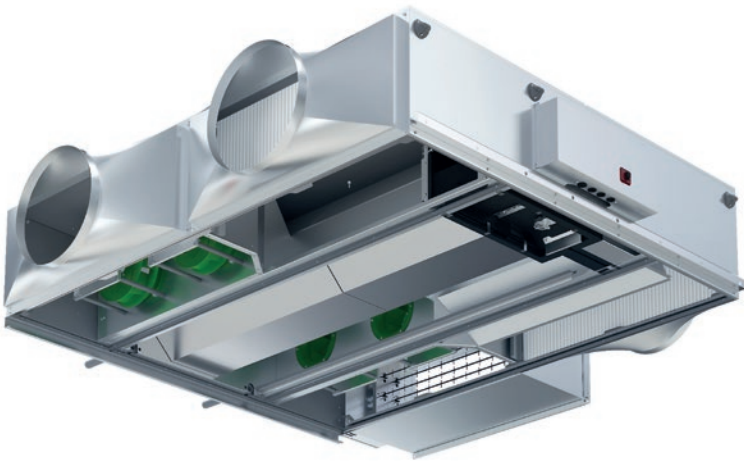
ENERGY SAVING
AND SILENT FANS WITH
EC MOTORS



PLUG&PLAY
PRODUCT



INTEGRATED
MULTIFUNCTIONAL
CONTROLS



VENTUS COMPACT FLOOR MOUNTED AIR HANDLING UNITS

A

B

C

D

E

up to **90%**
recovery efficiency



VENTUS Compact TOP
with **hex counter-flow**
heat exchanger



MINERAL WOOL
INSULATION



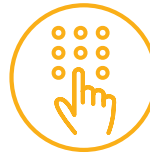
HIGHLY EFFICIENT ROTARY
AND HEX COUNTER-FLOW
HEAT EXCHANGER



ENERGY SAVING
AND SILENT FANS WITH
EC MOTORS



PLUG&PLAY
PRODUCT



INTEGRATED
MULTIFUNCTIONAL
CONTROLS



VENTUS Compact
with **rotary heat exchanger**
or **hex counter-flow heat exchanger**

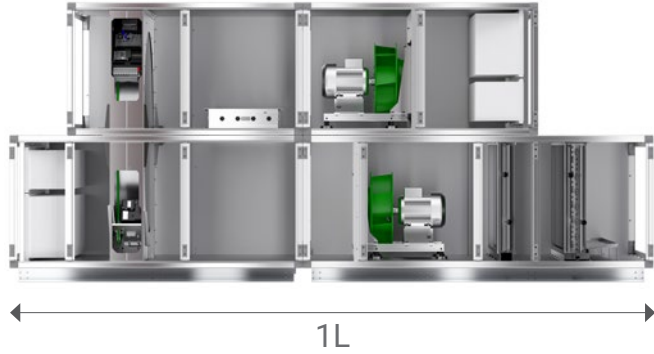
> VENTUS Compact

7 500 m³/h



> Standard Air Handling Units

7 500 m³/h



VENTUS COMPACT SUSPENDED AIR HANDLING UNITS

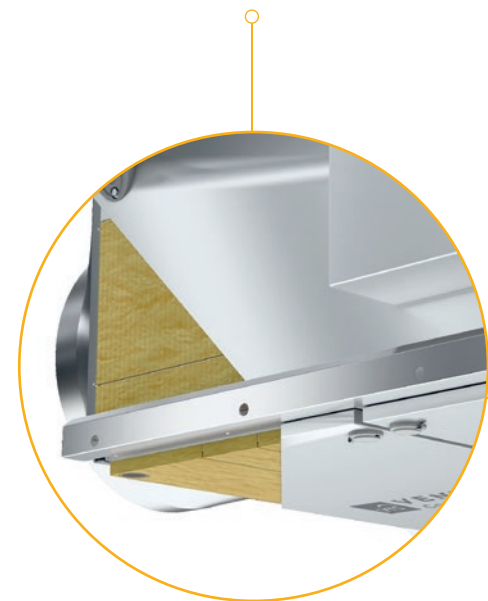
CASING

- » Panels filled with mineral wool, enclosed with steel sheet on both sides.
- » Casing parameters according to EN 1886: T2, TB3, L1, D1, F9.

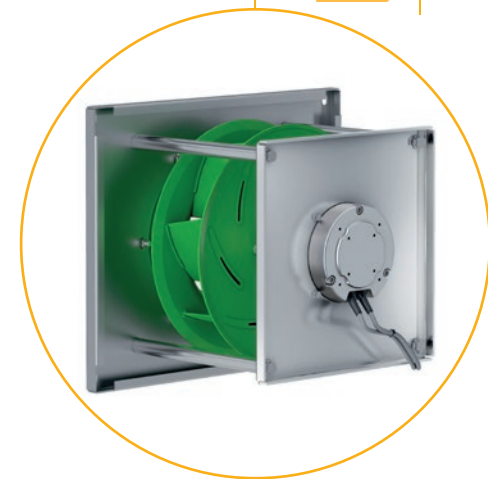
MINI-PLEAT FILTERS

Air filters with extended high efficiency filtration surface.

- » Supply - EU7 (ePM2,5 65%)
- » Exhaust - EU5 (ePM10 50%)

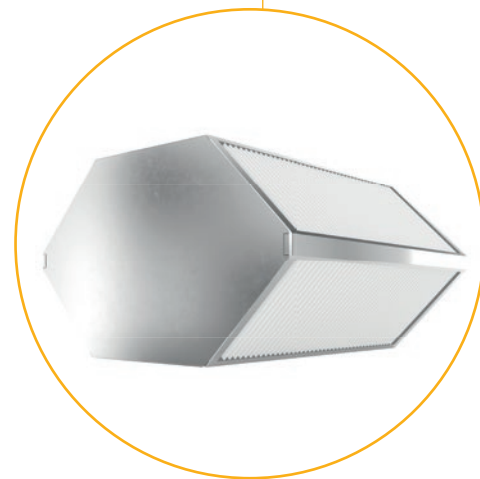


up to **93%**
drive efficiency



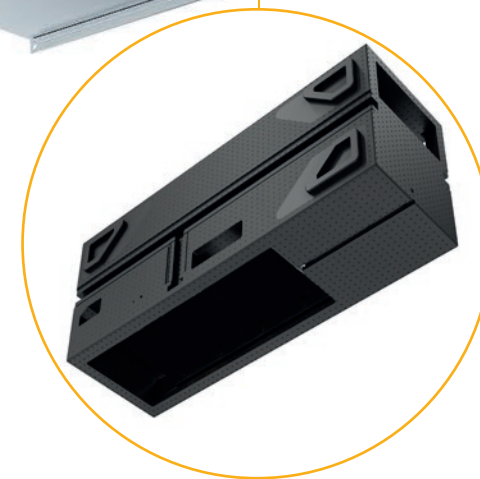
EC MOTORS

- » Efficient, silent and low vibrations fan with electronically commutated motor in a IE4 class.



ENERGY RECOVERY

- » Highly efficient counterflow hex recovery with by-pass.
- » Recovery efficiency reaching 90%.



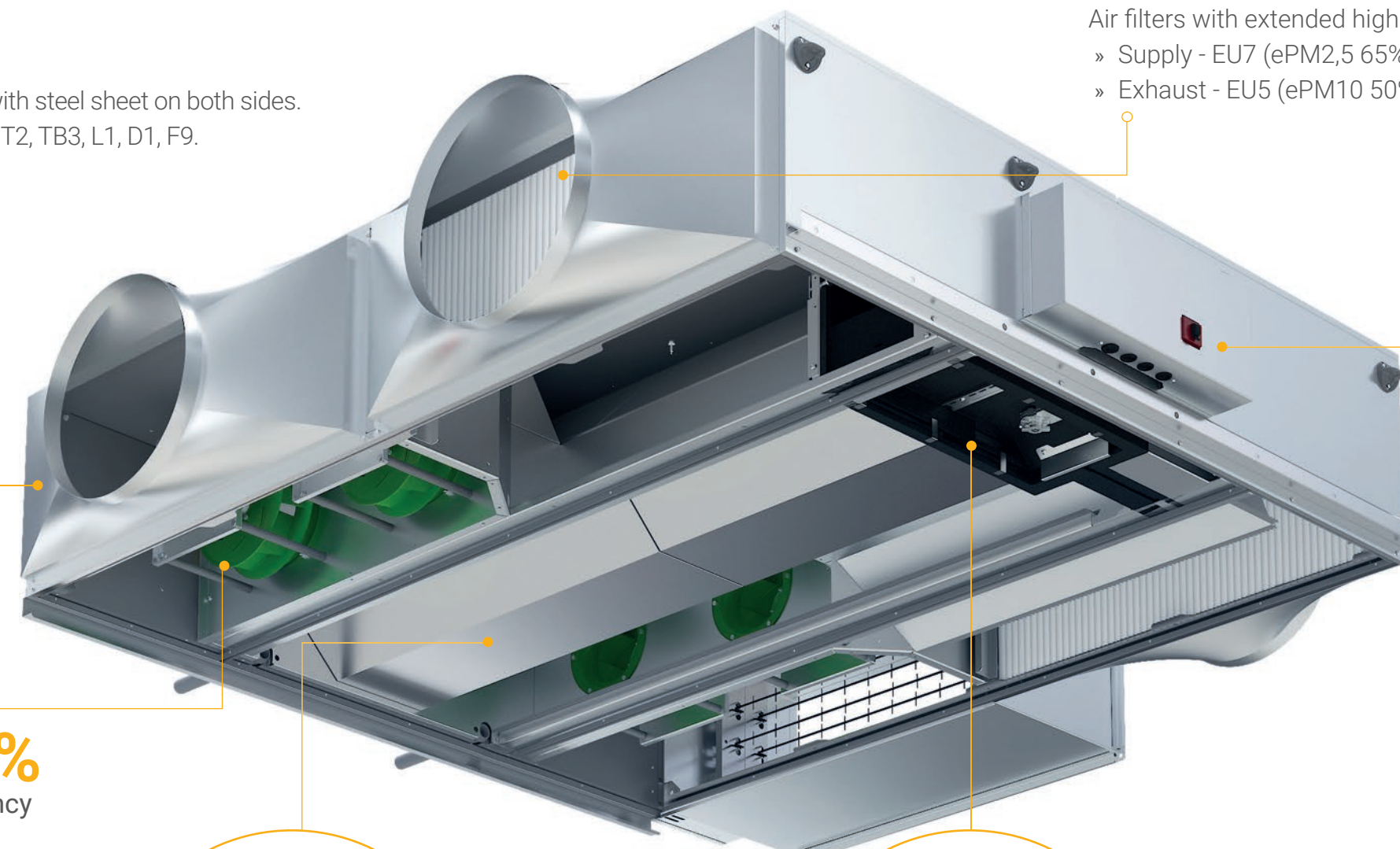
RECUPERATOR BY-PASS

- » Stepless adjustment of heat recovery capacity.
- » Passive cooling function.
- » Recuperator frost protection.



CONTROLS

- » Multifunctional controls, integrated with the unit – fully pre-configured and ready to run.



VENTUS COMPACT TOP FLOOR-MOUNTED UNITS WITH VERTICAL DUCT CONNECTION

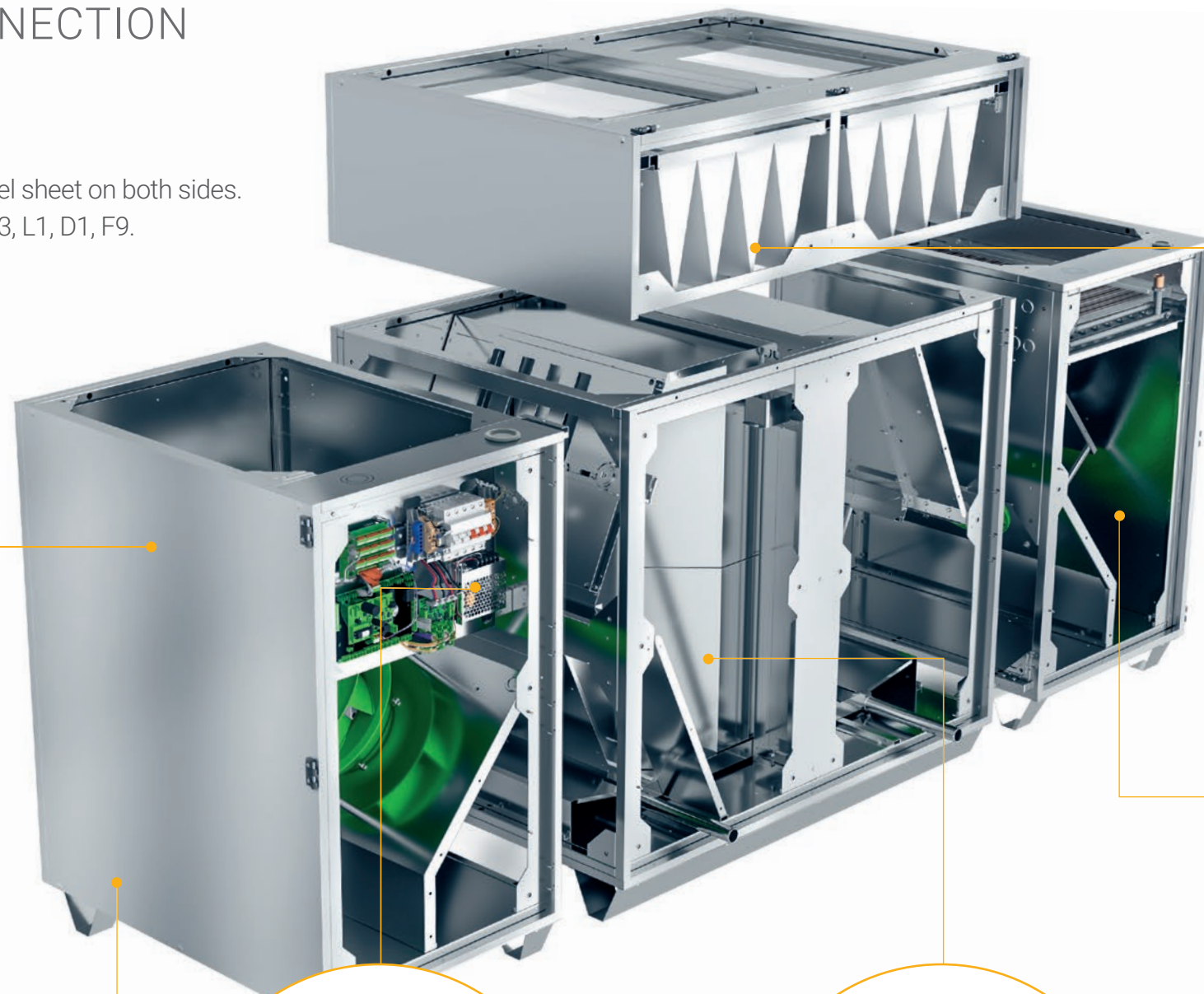
CASING

- » Panels filled with mineral wool, enclosed with steel sheet on both sides.
- » Casing parameters according to EN 1886: T2, TB3, L1, D1, F9.
- » Fan and filter section panels fitted with hinges.



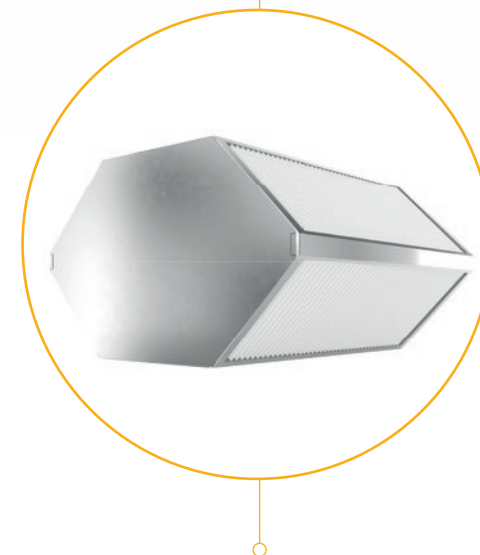
DIMENSIONS

- » Unit width 88 cm - can be transported through the opening of 90 cm without disassembling the device.



CONTROLS

- » Multifunctional controls, integrated with the unit – fully pre-configured and ready to run.



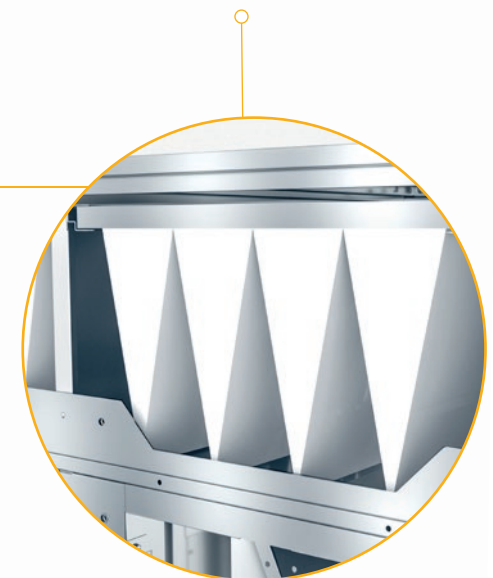
ENERGY RECOVERY

- » Highly efficient counterflow hex recovery with by-pass.
- » Recovery efficiency reaching 90%.

MINI-PLEAT OR BAG FILTERS

Air filters with extended high efficiency filtration surface.

- » Supply - EU7
- » Exhaust - EU5



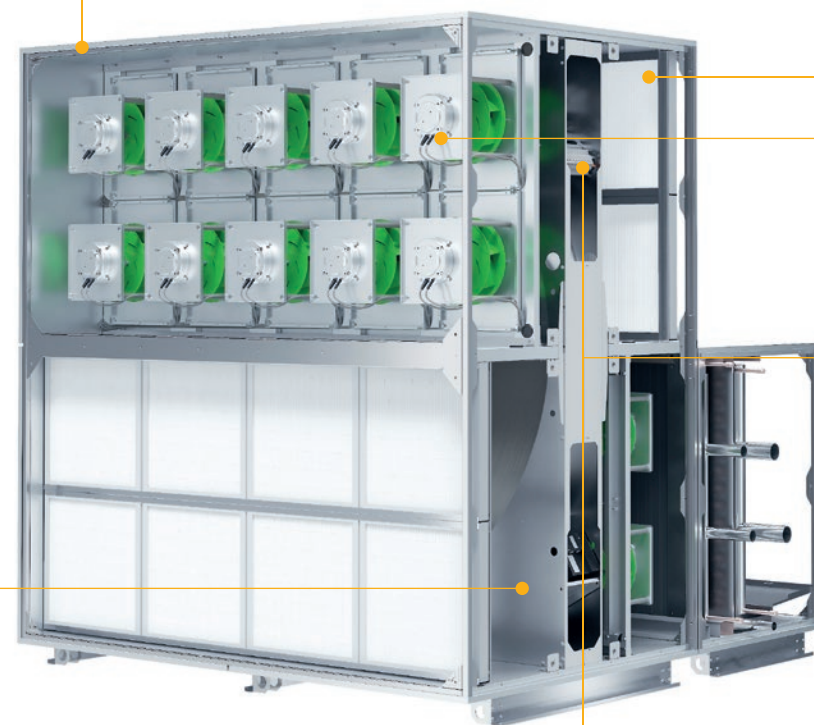
EC MOTORS

- » Efficient, silent and low vibrations fan with electronically commutated motor in a IE4 class.

VENTUS COMPACT FLOOR MOUNTED AIR HANDLING UNITS

CASING

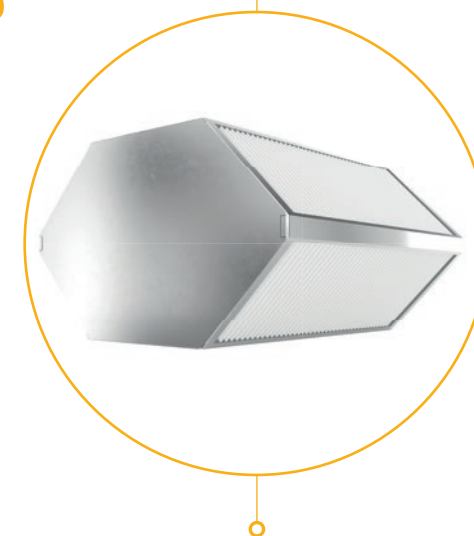
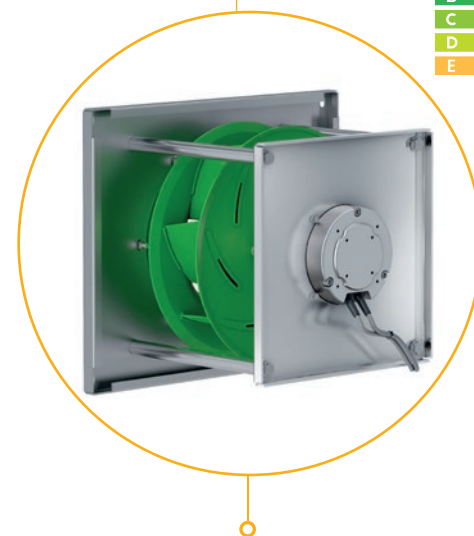
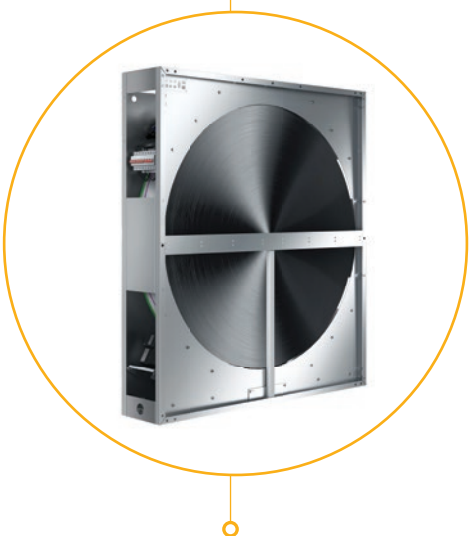
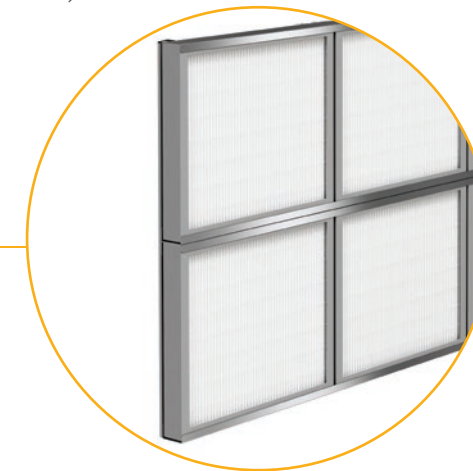
- » Panels filled with mineral wool, enclosed with steel sheet on both sides.
- » Casing parameters according to EN 1886: T2, TB3, L1, D1, F9.



MINI-PLEAT FILTERS

Air filters with extended high efficiency filtration surface.

- » Supply - EU7 (ePM2,5 65%)
- » Exhaust - EU5 (ePM10 50%)



up to **93%**
drive efficiency

ENERGY RECOVERY

- » Highly efficient heat wheel driven by EC motor.
- » Recovery efficiency reaching 86%.

CONTROLS

- » Multifunctional controls, integrated with the unit – fully pre-configured and ready to run.

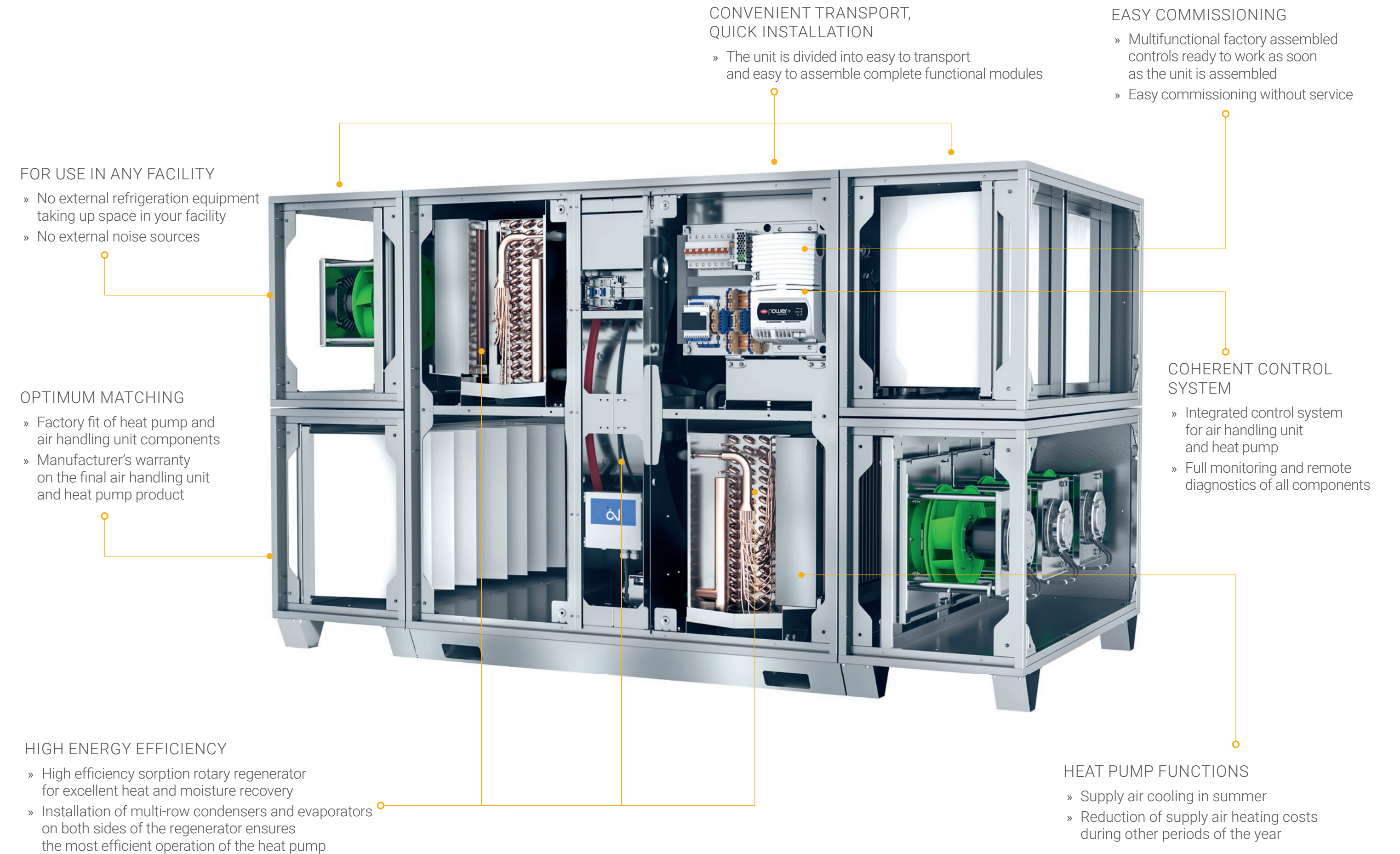
EC MOTORS

- » Efficient, silent and low vibrations fan with electronically commutated motor in a IE4 class.

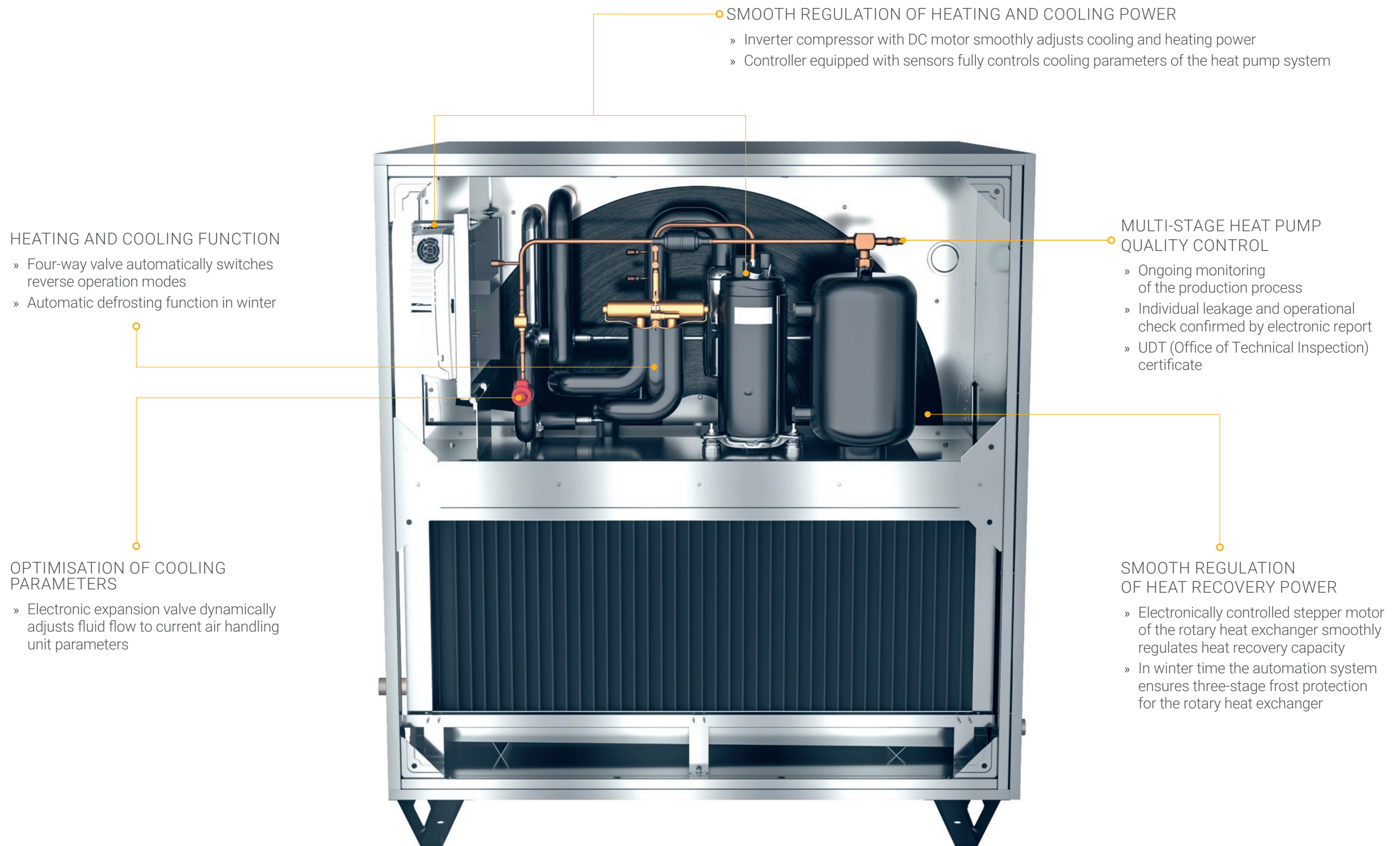
ENERGY RECOVERY

- » Highly efficient counterflow hex recovery with by-pass
- » Recovery efficiency reaching 90%

VENTUS COMPACT FLOOR MOUNTED UNITS WITH HEAT PUMP



VENTUS COMPACT FLOOR MOUNTED UNITS WITH HEAT PUMP




VENTUS COMPACT

SUSPENDED AIR HANDLING UNITS

Base unit overall data

Unit size	Nominal airflow	Airflow range	Height	Width	Duct connection heigth	Duct connection width
	[m³/h]	[m³/h]	[mm]	[mm]	[mm]	[mm]
VVS005s	500	150 - 650	400	770	318	305
VVS010s	1000	300 - 1100	400	1190	318	515
VVS015s	1500	450 - 1650	400	1590	318	715
VVS020s	2000	600 - 2200	490	1650	408	743
VVS030s	3000	900 - 3300	490	2200	408	1018

Section length

Unit size		F	H	C	HC
	Base unit	Additional air treatment functions			
	[mm]	[mm]	[mm]	[mm]	[mm]
VVS005s	1350	320	320	390 - 480	480 - 800
VVS010s	1500	220	220	390 - 480	480 - 780
VVS015s	1500	220	220	390 - 480	480 - 780
VVS020s	1828	220	220	390 - 480	480 - 780
VVS030s	1828	220	220	390 - 480	480 - 780

Duct accessories

Dimmension WxH [mm]	VVS005s	VVS010s	VVS015s	VVS020s	VVS030s
Flexible connection	305x313	485x288	685x288	730x375	1005x375
Air damper	305x313	485x288	685x288	730x375	1005x375
Rectangle spigot	305x313/300x300	510x310/400x350	710x310/400x350	740x400/500x400	1015x400/800x400
Rounded spigot	305x313/355	510x310/355	710x310/355	740x400/450	1015x400/450

VENTUS COMPACT

FLOOR MOUNTED AIR HANDLING UNITS

Base unit overall data

Unit size	Nominal airflow	Airflow range	Height	Width	Duct connection heigth	Duct connection width
	[m³/h]	[m³/h]	[mm]	[mm]	[mm]	[mm]
VVS021c	2100	840 - 2310	991	967	345	860
VVS030c	3000	900 - 3300	1255	967	480	860
VVS040c	4000	1200 - 4400	1255	1174	480	1065
VVS055c	5500	1650 - 6050	1525	1345	615	1235
VVS075c	7500	2250 - 8250	1765	1486	735	1380
VVS100c	10000	3000 - 11000	1965	1666	835	1560
VVS120c	12000	3600 - 13200	2039	1897	870	1790
VVS150c	15000	4500 - 16500	2241	2091	970	1985

Height includes 90 mm base rail

Base unit lengths

Unit size						
	[mm]	[mm]	[mm]	[mm]	[mm]	[mm]
VVS021c	1240	1080	1080	2 230	2 230	2 500
VVS030c	1240	1080	1080	2 230	2 230	2 500
VVS040c	1240	1080	1080	2 230	2 230	2 500
VVS055c	1240	1080	1080	2 290	2 290	2 560
VVS075c	1240	1080	1080	2 530	2 530	2 800
VVS100c	1300	1300	1080	2 570	2 570	2 800
VVS120c	1300	1300	1080	2 670	2 670	2 900
VVS150c	1300	1300	1080	2 730	2 730	2 940

Additional section length

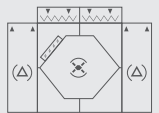
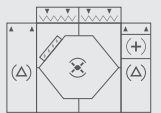
Unit size	F	H	C	HC	S
	[mm]	[mm]	[mm]	[mm]	[mm]
VVS021c	310	310 - 710	370 - 710	710	1080
VVS030c	310	310 - 710	370 - 710	710	1080
VVS040c	310	310 - 710	370 - 710	710	1080
VVS055c	310	310 - 630	450 - 790	790	1080
VVS075c	310	310 - 630	450 - 790	790	1080
VVS100c	310	310 - 630	890	890	1080
VVS120c	310	310 - 630	890	890	1080
VVS150c	310	310 - 630	920	920	1080

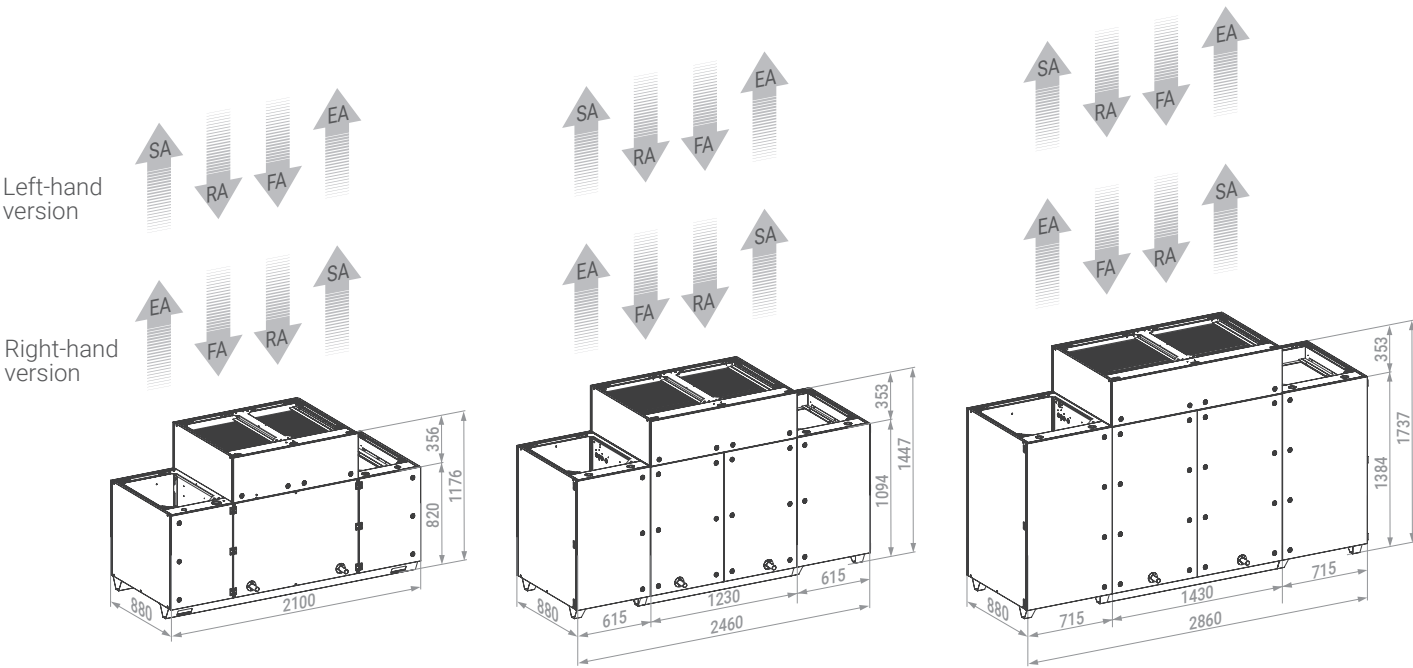
VENTUS COMPACT TOP - FLOOR-MOUNTED UNITS WITH VERTICAL DUCT CONNECTION

Base unit overall data

Unit size	Nominal airflow	Airflow range	Height	Width	Duct connection
	[m³/h]	[m³/h]	[mm]	[mm]	[mm]
VVS023c	2100	1250-2100	1176	880	700x445
VVS033c	3000	1800-3000	1447	880	700x513
VVS043c	4000	2400-4000	1737	880	700x613

Base unit lengths

Unit size		
	[mm]	[mm]
VVS023c	2100	2100
VVS033c	2460	2460
VVS043c	2860	2860



FA - fresh air intake
SA - fresh air supply to the room
RA - return air intake from the room
EA - exhaust air ejection from the room



VENTUS COMPACT - FLOOR MOUNTED UNITS WITH HEAT PUMP

Base unit overall data

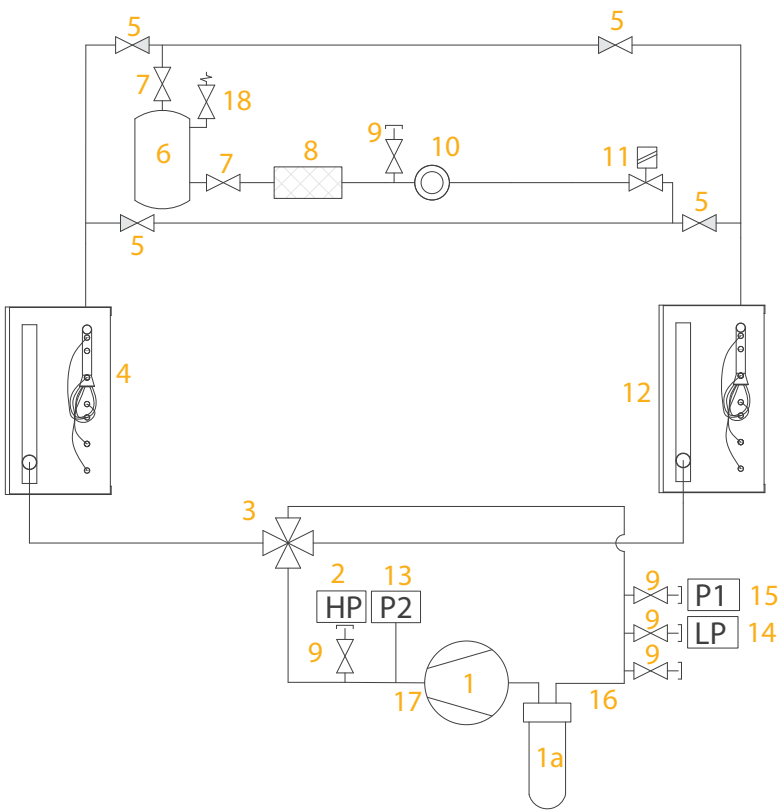
Unit size	Nominal airflow	Airflow range	Height	Width	Duct connection height	Duct connection width
	[m³/h]	[m³/h]	[mm]	[mm]	[mm]	[mm]
VVS021c	2100	1200-2100	991	967	345	860
VVS030c	3000	1500-3000	1255	967	480	860
VVS040c	4000	2000-4000	1255	1174	480	1065
VVS055c	5000	2500-5500	1525	1345	615	1235
VVS075c	7500	3750-7500	1765	1486	735	1380

* - the range of the heat pump function depends on the outdoor air parameters

Base unit lengths

Unit size		
	[mm]	[mm]
VVS021c	2140	2140
VVS030c	2140	2140
VVS040c	2140	2140
VVS055c	2140	2140
VVS075c	2140	2140

Heat pump refrigeration system



Refrigeration components

- 1 Compressor
- 1a Liquid separator
- 2 High pressure switch
- 3 4-way valve
- 4 Evaporator/Condenser
- 5 Check valve
- 6 Liquid medium tank
- 7 Shut-off valve (Rotalock)
- 8 Filter drier
- 9 Service valve
- 10 Sight glass
- 11 Electronic expansion valve
- 12 Evaporator/Condenser
- 13 High-pressure transducer
- 14 Low-pressure transducer
- 15 Low-pressure switch
- 16 Suction temperature sensor
- 17 Discharge temperature sensor
- 18 Safety valve

mHMI application

VTS Group provides an mHMI app that enables start-up, monitoring of operation and parameter control of VENTUS compact and modular air handling units. The app can be downloaded from Google Play and App Store.

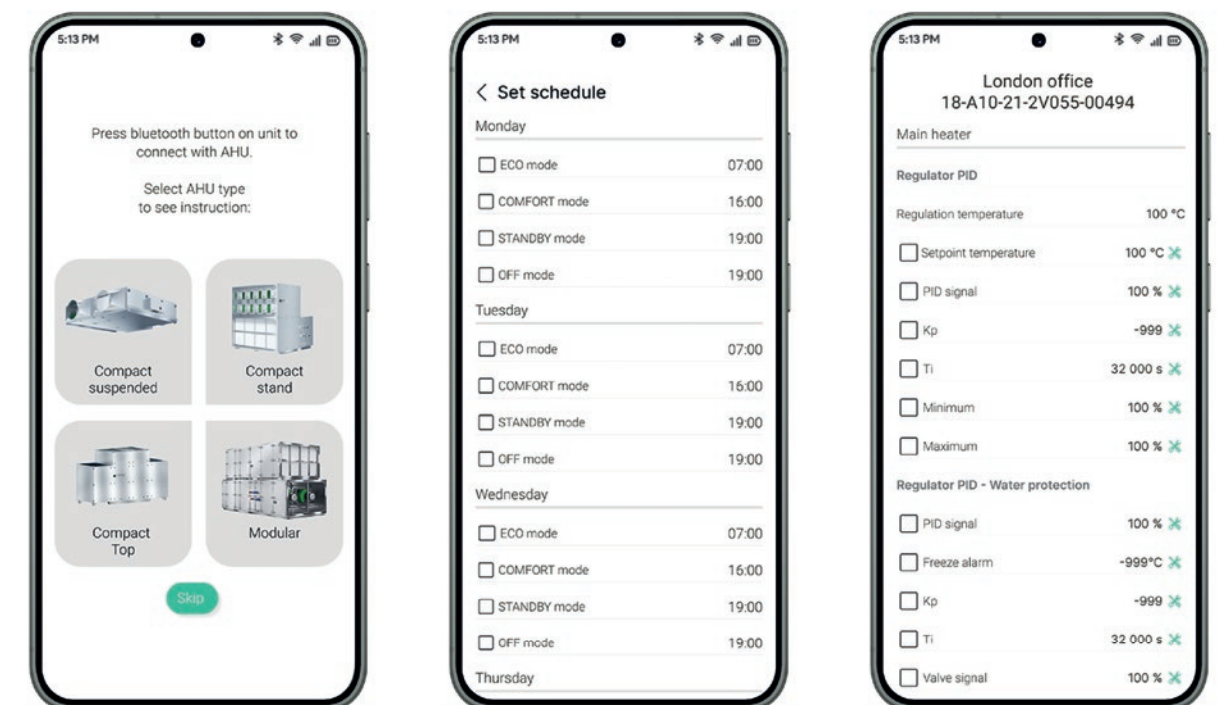
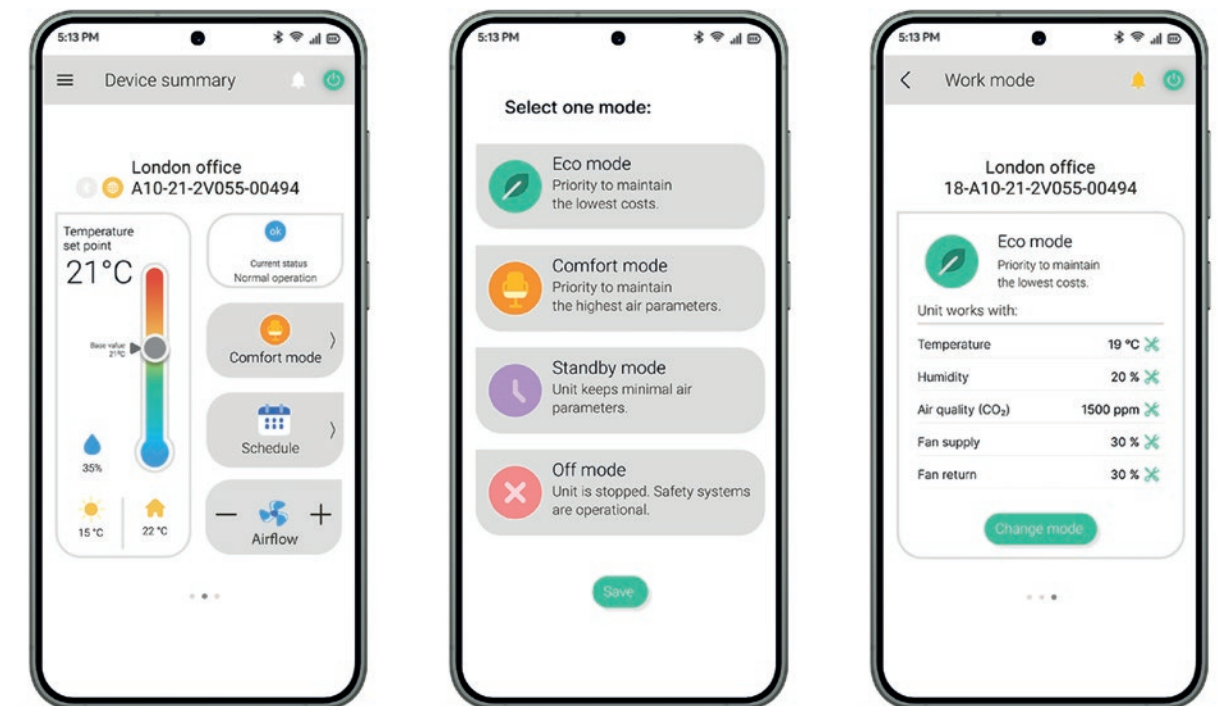


The app connects to the unit using Bluetooth technology. All you need to do is launch the app and activate the Bluetooth module, which is located in the automatic control cabinet. The app will automatically detect the unit which you can then connect to.



mHMI enables:

- » start up of the unit without the need for a physical HMI
- » monitoring the unit's operating parameters
- » managing the unit's operation, including changing the operating modes, changing individual parameters, setting the unit's operating schedule, or viewing and clearing alarms.



VMS – VENTUS MANAGEMENT SYSTEM

VTS supplies control system with a factory-implemented application for remote monitoring and management of the operating parameters of the units in real time via a web browser on any mobile device.

VENTUS MANAGEMENT SYSTEM:

- » Displaying visualisations on any devices - from PC to mobile devices
- » Monitoring and management of the majority of devices from the open visualisation of a single unit
- » Easy and intuitive change of the operating mode of the unit using a central button
- » Tools for supporting easy and quick setup of the optimal operating schedule of the unit



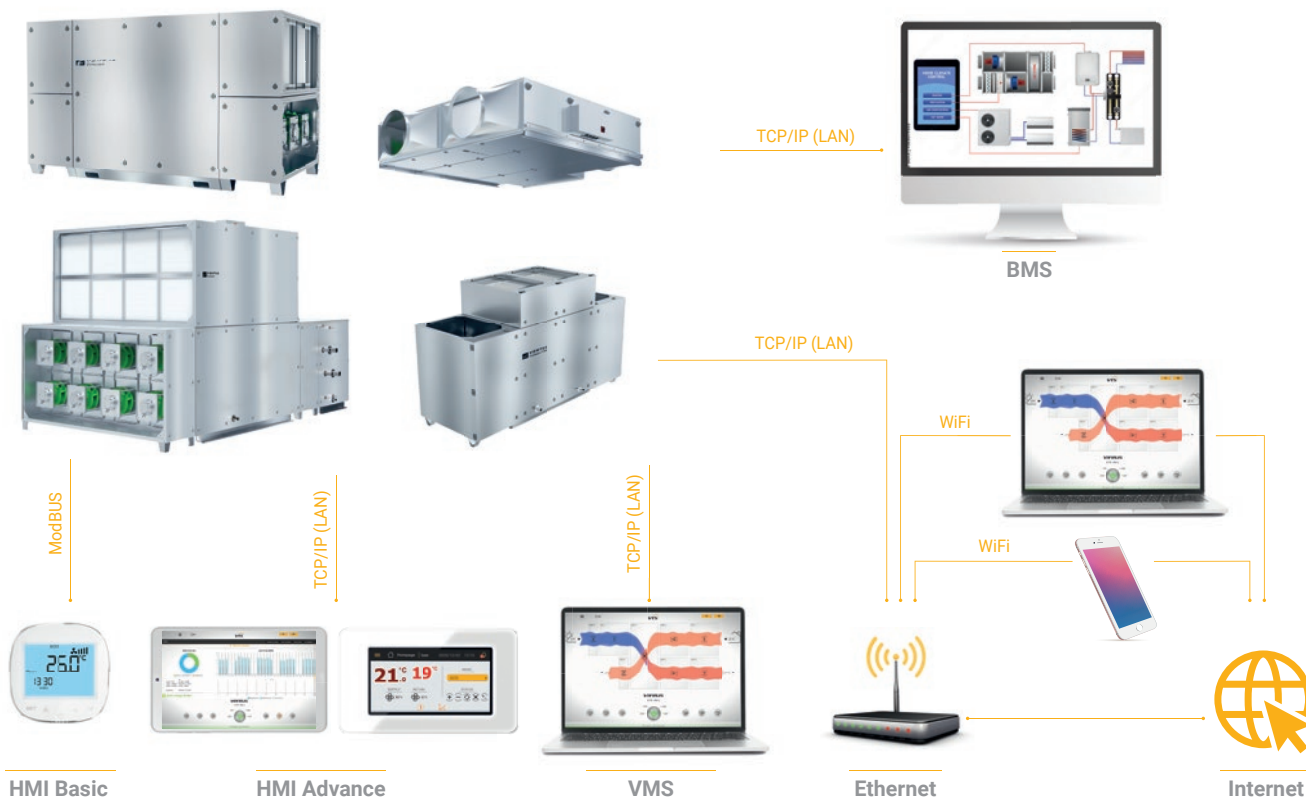
Graphical operation calendar:

- » Changing time intervals using sliders



Faults and alarms handling:

- » Clearing alarms
- » Alarm logging



Charts of unit's operation:

- » Two charts – main and secondary
- » Free selection of the set of parameters for monitoring and assigning them to selected ranges



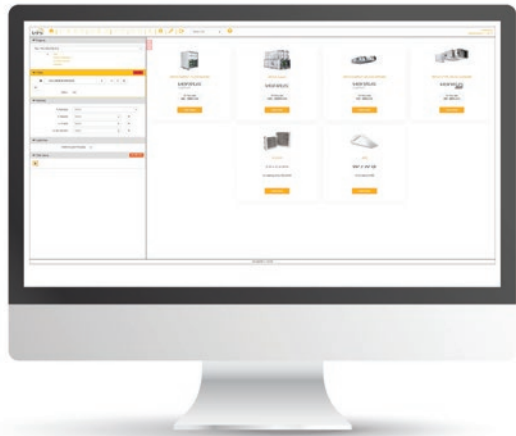
Analysis of savings resulting from the operating scenario used:

- » Graphical representation of the use of particular energy media
- » Costs and savings shown in any currency.

CLIMACAD ONLINE 4.0 (CCOL 4)

Customized configuration

Integrated savings calculator



Intuitive selection assistant step by step

Integrated with CRM, ERP, WMA system

CCOL4 IS COMPATIBLE WITH:

» all browsers



» all operating system



» all devices

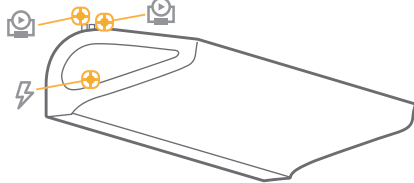
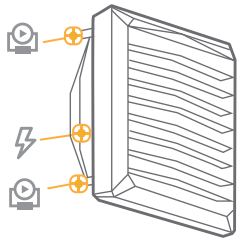
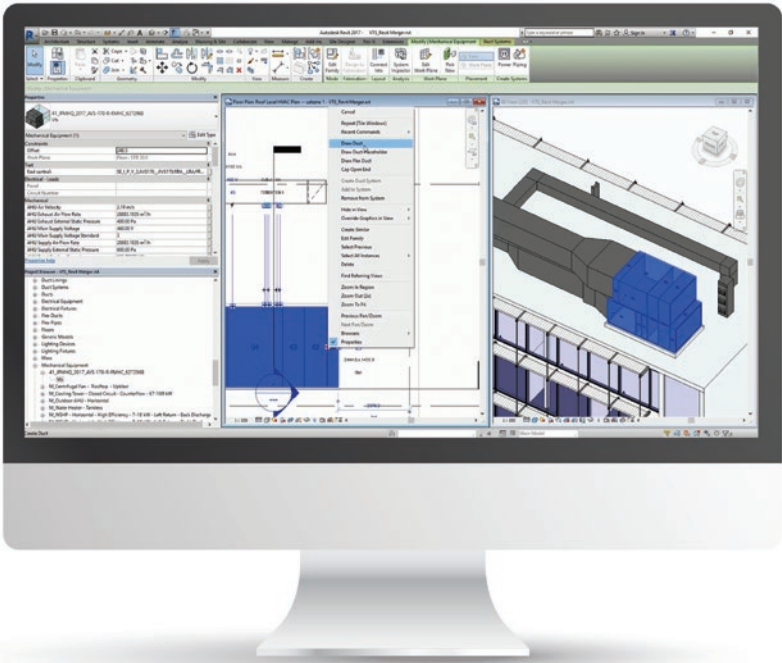


DATA EXPORT TO



VTS BIM - INNOVATIVE APPROACH TO DIGITAL MODELS OF AIR-HANDLING UNITS

VTS has created a possibility of dynamic online generation of digital models of the units VENTUS VVS, VENTUS Compact and American VENTUS AVS. This is possible due to the launch of the new ClimaCAD OnLine 4.0 product selection program that features an .rfa [Revit®] file generator



Generated objects contain detailed parameters connectors:

- » **air systems**
- » **hydraulic systems**
- » **sanitary systems**
- » **electric systems**

as well as the complete dimensional data, including unit's maintenance and service (repair) zone.

VTS also provides digital models of WING air curtains and VOLCANO air heaters.

The models contain:

- » **parametrized electric and hydraulic connectors,**
- » **mount options vertically and horizontally,**
- » **presentation of the range of air stream,**
- » **parameter of any inclination angle of an air heater in relation to the horizontal plane.**

Models can be downloaded from: <https://vtsgroup.com/vts-bim>

This image shows a single sheet of white paper with horizontal ruling lines. The lines are evenly spaced and run across the width of the page. There are no margins, text, or other markings on the paper.[illegible]



VTS Group S.A.

20, rue de l'Industrie
L-8399 Windhof, Luxembourg
Phone: +352 20 60 22 41
Email: contact@vtsgroup.lu

www.vtsgroup.com

Due to continuous improvement of the products, VTS reserves right to implement modifications. Some of technical data and descriptions may vary from the actual products specification. Before placing the order, please, confirm all technical specification with VTS sales representative.